

Hoshizaki Cellular Gateway Kit SP-5506

For Use with Flaker, Cubelet, and DCM Series Icemakers

Check to ensure that all parts are included:

Index No.	Description	Part Number	Qty
1	Control Board	4A6833G01	1
2	Fastcomm Cellular Gateway Device	4A6732-01	1
3	Nylon Tie	8911-0200	15

Index No.	Description	Part Number	Qty
4	Bushing	428394-02	1
5	Double Sided Tape (7.5 cm (3"))	8209-0007	1
6	Cork Insulation Tape (11 cm (4-3/8"))	8216-BK20	3

⚠ WARNING

- This appliance should be serviced only by qualified service personnel to reduce the risk of death, electric shock, serious injury, or fire.
- No service should be undertaken until the technician has thoroughly read these instructions. Failure to follow these instructions will adversely affect safety, performance, component life, and warranty coverage.
- Wear proper PPE (personal protective equipment) when executing these procedures.
- **Before Servicing:**
Flaker and Cubelet Models: Move the control switch to the "OFF" position, then turn off the power supply. Lockout/Tagout to prevent the power supply from being turned back on inadvertently.
DCM Models: Move the control switch to the "OFF" position, then move the power switch to the "OFF" position. Turn off the power supply. Lockout/Tagout to prevent the power supply from being turned back on inadvertently.
- The manufacturer cannot be held responsible for injury or damage resulting from improper, incorrect, or unreasonable use or installation.
- **CHOKING HAZARD:** Ensure all components, fasteners, and thumbscrews are securely in place after installation. Make sure, that none have fallen into the ice storage bin/dispenser unit.

Installation Instructions

A. Replace the Control Board

- 1) **For Flaker and Cubelet Models:** Remove the front panel, then move the control switch to the "OFF" position. Turn off the icemaker power supply. Lockout/Tagout to prevent the power supply from being turned back on inadvertently.
For DCM Models: Move the control switch to the "OFF" position, then remove the front panel and move the power switch to the "OFF" position. Turn off the icemaker power supply. Lockout/Tagout to prevent the power supply from being turned back on inadvertently.
- 2) Remove the top, right, and left panels. Next, remove the control box cover.
- 3) Remove the current control board wiring connectors, then remove the control board. Place the new control board provided in this kit in its correct position. Secure all wiring connectors back in their correct positions. See Fig. 1. Note: The control board has a conversion label placed on the relays of the control board.

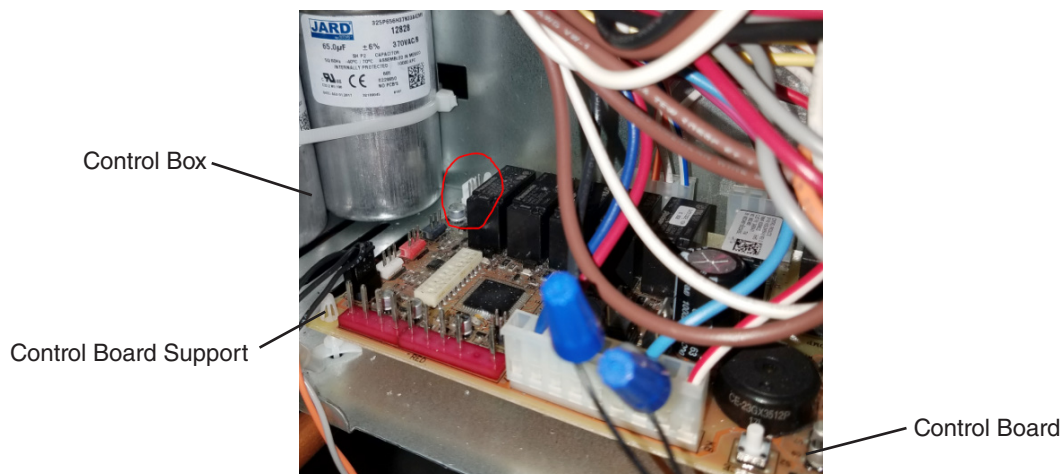


Fig. 1
1

B. Cellular Gateway Installation

When choosing a mounting location, make sure there is a 115VAC power supply outlet near the icemaker for the cellular gateway power supply. Confirm the location provides adequate distance for the power supply cord to reach the required electrical outlet.

- 4) Using the double sided tape provided in this kit, mount the cellular gateway to the appliance in one of the locations listed below:
Option 1: Rear Panel. See Fig. 2.
Option 2: **Flaker and Cubelet Models:** Right Side Panel.
DCM Models: Left Side Panel for DCM-300, DCM-500, and DCM-751. Right Side Panel for DCM-270.
- Option 3: Inside the icemaker. Note: When mounting the cellular gateway inside the icemaker, transmission quality may be poor.
- 5) Drill a 1/2" (12.7 mm) hole through the panel. Place a 1/2" romex connector (not provided in this kit) into the hole. See Fig. 2.
NOTICE! Be careful not to drill through any copper tubing, wires, or components.

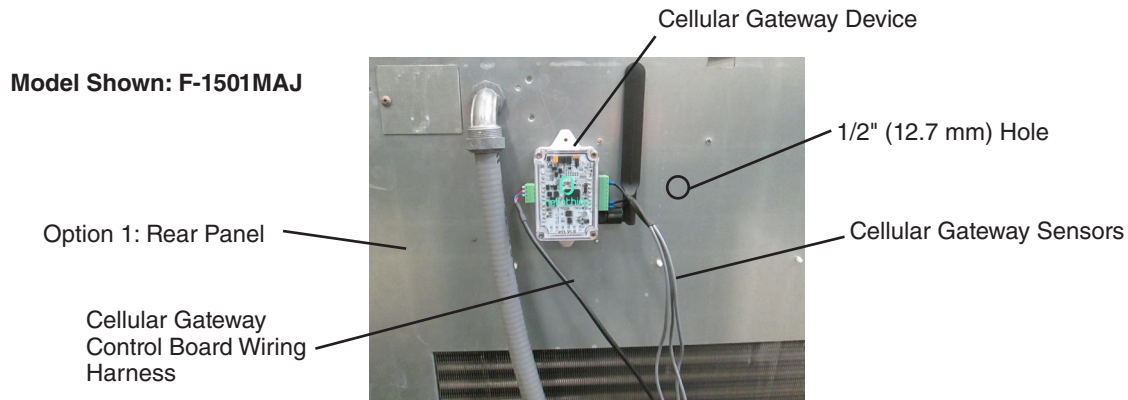


Fig. 2

- 6) Route the cellular gateway control board wire harness and the sensors through the romex connector installed in step 5. Tighten the romex connector onto the wires.
- 7) Locate a safe clear area on the side of the control box to drill a 1/2" (12.7 mm) hole, then drill the 1/2" (12.7 mm) hole.
NOTICE! Be careful not to drill through any wiring or electrical components; do not allow metal shavings from drilling to drop onto the electrical components. Route the cellular gateway control board wire harness connector through the 1/2" (12.7 mm) hole just drilled. Next, place the 1/2" (12.7 mm) bushing provided in this kit, around the wire harness and push it into the hole.
- 8) Locate the control board 4-pin J2 connector. See Fig. 3. Connect the cellular gateway control board wire harness to the control board 4-pin J2 connector. See Fig. 4.
- 9) Secure the cellular gateway control board wire harness with nylon ties provided in this kit. **NOTICE! Secure the cellular gateway control board wire harness away from copper tubing, moving parts, and sharp edges.**
- 10) Replace the control box cover.

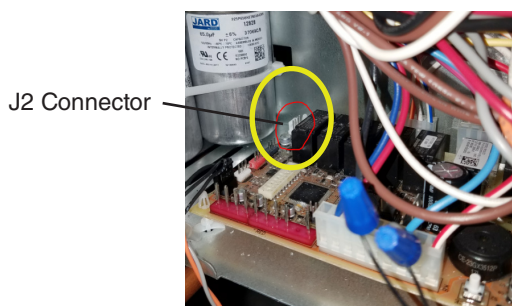


Fig. 3

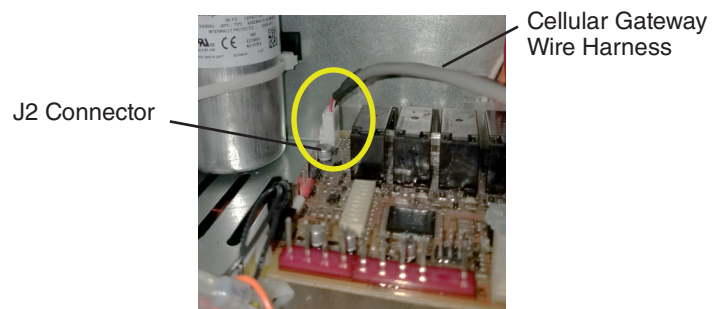


Fig. 4

C. Sensor Installation

There are 3 temperature sensors plugged into the cellular gateway labeled as follows: Compressor Discharge Sensor, Thermostatic Expansion Valve Outlet Sensor, and Evaporator Outlet Sensor.

11) Route each of the sensors to their appropriate location. See Fig. 5.

- a. Compressor Discharge Sensor: On the discharge copper tube between the compressor and the high pressure switch.
- b. Thermostatic Expansion Valve Outlet Sensor: On the copper tube between the thermostatic expansion valve and the evaporator.
- c. Evaporator Outlet Sensor: On the copper tube between the evaporator and the thermostatic expansion valve sensing bulb.

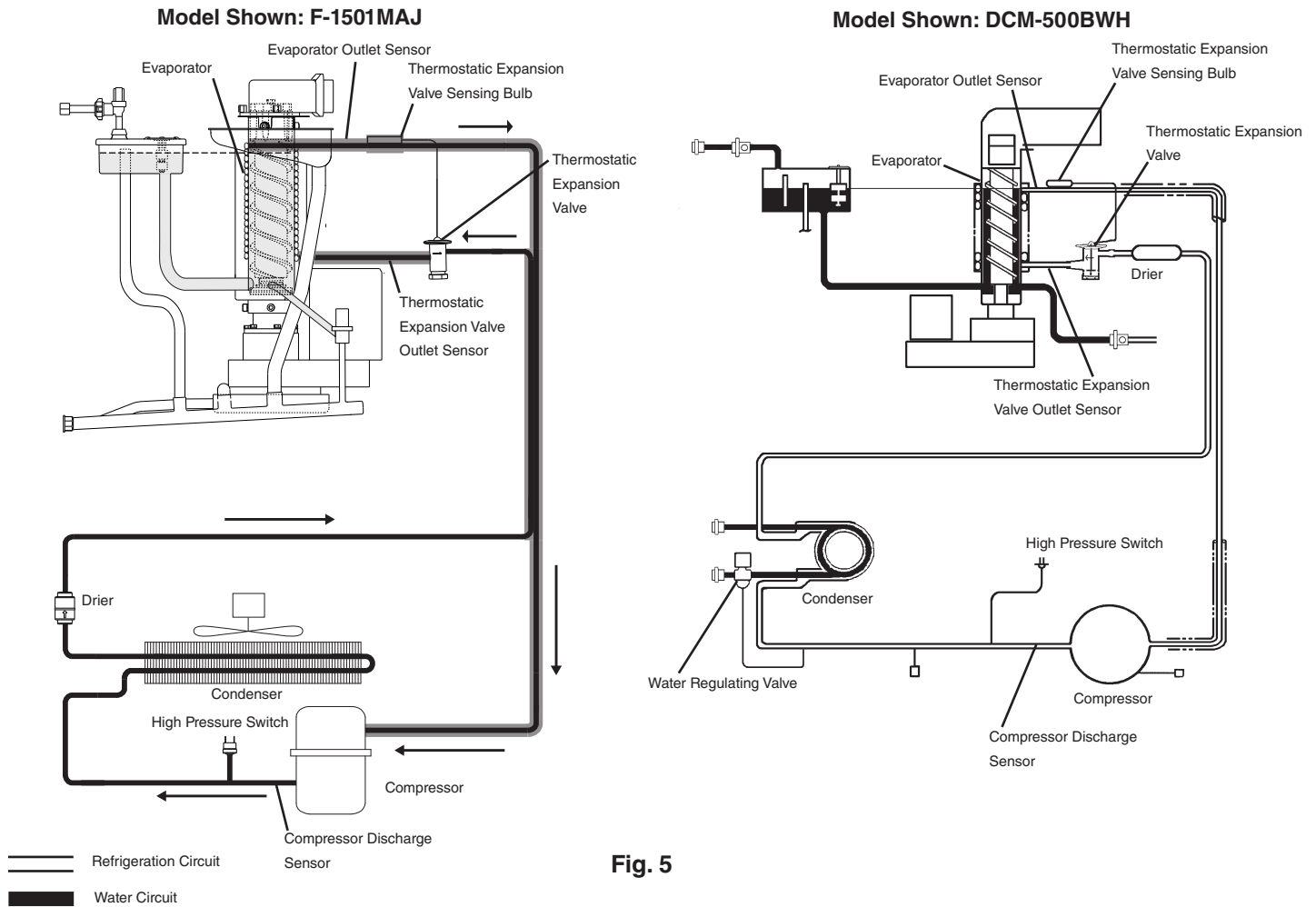


Fig. 5

12) If necessary, remove any insulation from the copper tube, then place and secure the sensor on the copper tube with a nylon tie provided in this kit. See Fig. 6. Next, completely wrap the sensor with the cork insulation tape provided in this kit. See Fig. 7. Replace the insulation (if applicable) after installing the sensor and secure with nylon ties provided in this kit.

13) Repeat step 12 for the remaining sensors.

14) Secure the sensor wires from this kit with nylon ties provided in this kit. **NOTICE! Secure the sensor wires away from copper tubing, moving parts, and sharp edges.**

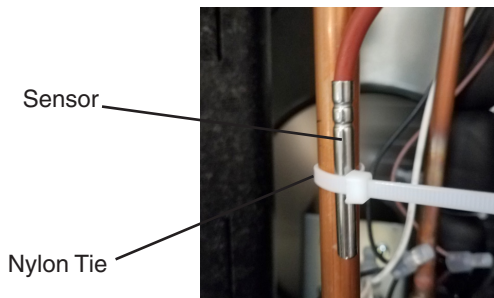


Fig. 6

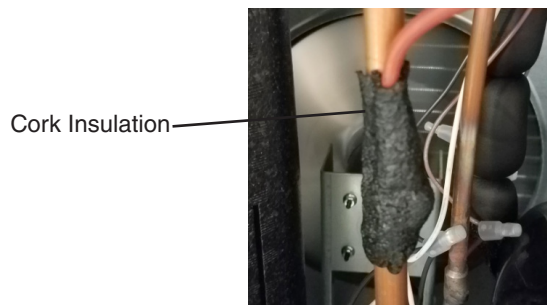


Fig. 7

- 15) Plug the cellular gateway power supply cord into the 115VAC electrical outlet. The cellular gateway turns on and 3 red LEDs turn on. See Fig. 8.

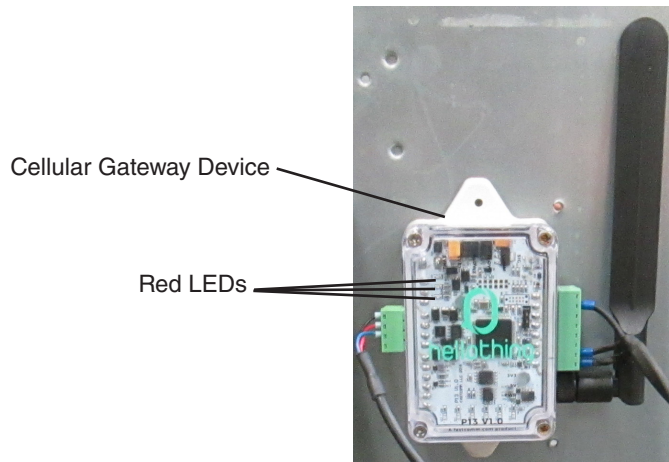


Fig. 8

- 16) Replace the right, left, and top panels in their correct positions.
- 17) **For Flaker and Cubelet Models:** Move the icemaker control switch to the "ICE" position. Replace the front panel in its correct position, then turn on the power supply to the icemaker to start the automatic icemaking process.
- For DCM Models:** Move the power switch to the "ON" position. Replace the front panel in its correct position. Move the control switch to the "ON" position. then turn on the power supply to the icemaker to start the automatic icemaking process.

For technical issues related to the cellular gateway operation, contact:

Hoshizaki America Technical Development Department at 1-800-233-1940. Ext. 11442.

For dashboard login account or any other issues related to cellular gateway connectivity, contact:

Fastcomm – Engineering Department at 404-951-8777; Email: wihan@fastcomm.com